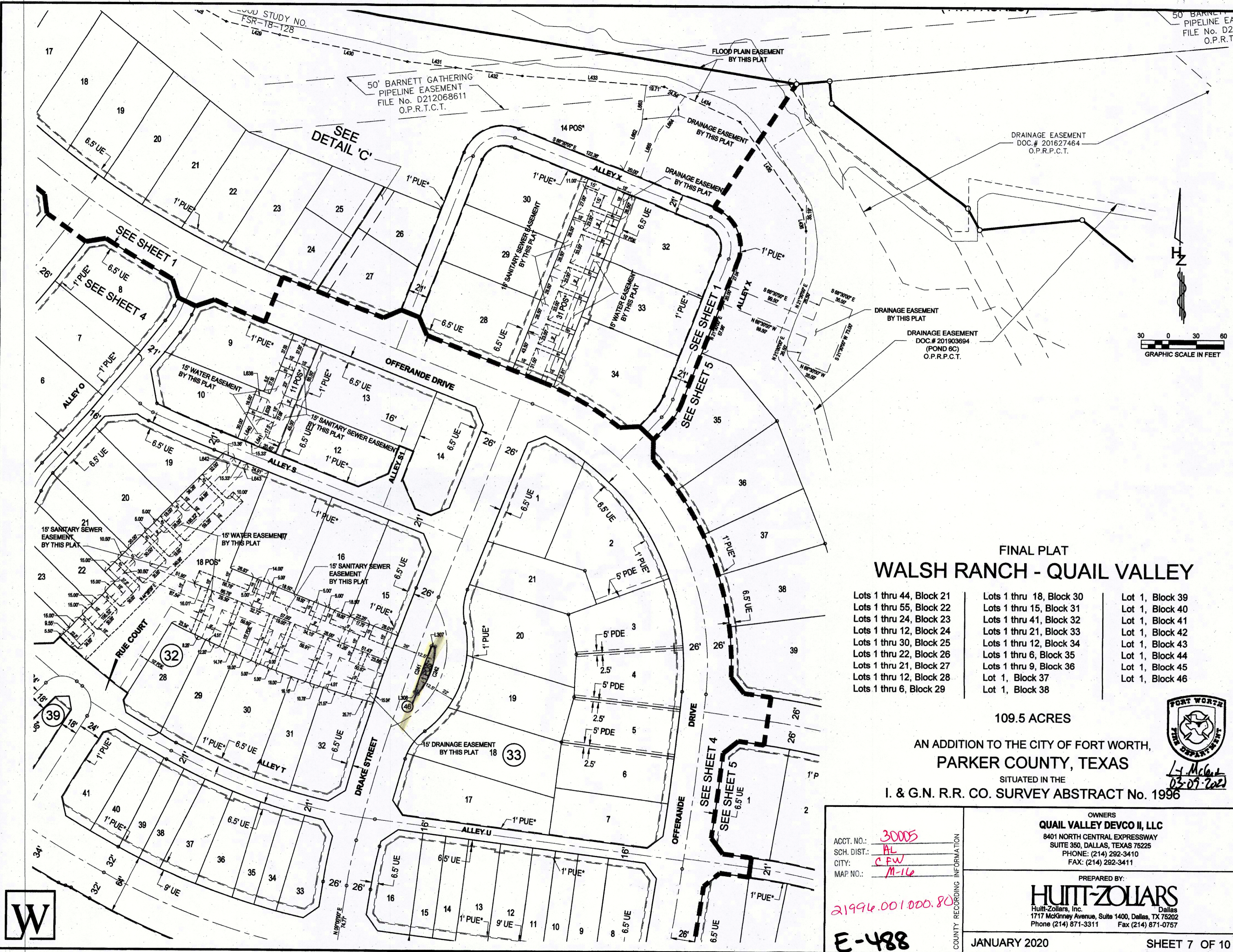


DWG: \\HDD\DALAS\Info\30306100-Walsh Ranch\02-Quail Valley\PHASE 3-Planning Area\lpld\dwg\FINAL_PLAT_PA-2B TRACT2.dwg USER: boole
 DATE: Feb 18, 2020 12:16pm XREFS: PA 2-B.FP BD PA 2-A_BASE EXISTING BASE 20181217_306124_Prop_Base_Lot Layout _306124_Prop_Base_Lot Layout

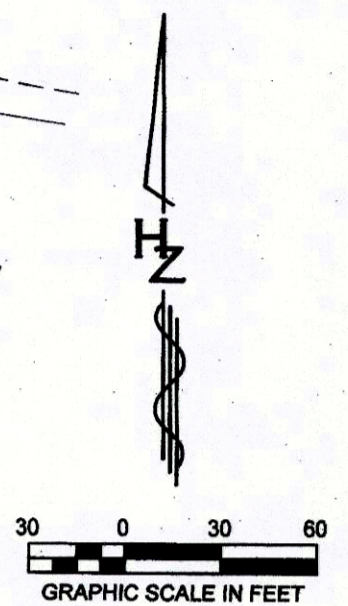


50' BARNETT PIPELINE EAS FILE No. D21 O.P.R.T

50' BARNETT GATHERING PIPELINE EASEMENT FILE No. D212068611 O.P.R.T.C.T.

DRAINAGE EASEMENT DOC.# 201627464 O.P.R.P.C.T.

DRAINAGE EASEMENT DOC.# 201803694 (POND 6C) O.P.R.P.C.T.



FINAL PLAT WALSH RANCH - QUAIL VALLEY

- | | | |
|--------------------------|--------------------------|-----------------|
| Lots 1 thru 44, Block 21 | Lots 1 thru 18, Block 30 | Lot 1, Block 39 |
| Lots 1 thru 55, Block 22 | Lots 1 thru 15, Block 31 | Lot 1, Block 40 |
| Lots 1 thru 24, Block 23 | Lots 1 thru 41, Block 32 | Lot 1, Block 41 |
| Lots 1 thru 12, Block 24 | Lots 1 thru 21, Block 33 | Lot 1, Block 42 |
| Lots 1 thru 30, Block 25 | Lots 1 thru 12, Block 34 | Lot 1, Block 43 |
| Lots 1 thru 22, Block 26 | Lots 1 thru 6, Block 35 | Lot 1, Block 44 |
| Lots 1 thru 21, Block 27 | Lots 1 thru 9, Block 36 | Lot 1, Block 45 |
| Lots 1 thru 12, Block 28 | Lot 1, Block 37 | Lot 1, Block 46 |
| Lots 1 thru 6, Block 29 | Lot 1, Block 38 | |

109.5 ACRES

AN ADDITION TO THE CITY OF FORT WORTH,
PARKER COUNTY, TEXAS

SITUATED IN THE
I. & G.N. R.R. CO. SURVEY ABSTRACT No. 1996



L. McLean
03-09-2020

ACCT. NO.: 30005 SCH. DIST.: AL CITY: CFW MAP NO.: M-16 21996.001.000.80 E-488	OWNERS QUAIL VALLEY DEVCO II, LLC 8401 NORTH CENTRAL EXPRESSWAY SUITE 350, DALLAS, TEXAS 75225 PHONE: (214) 292-3410 FAX: (214) 292-3411
	PREPARED BY: HUITT-ZOLIARS Huitt-Zoliars, Inc. Dallas 1717 McKinney Avenue, Suite 1400, Dallas, TX 75202 Phone (214) 871-3311 Fax (214) 871-0757
COUNTY RECORDING INFORMATION JANUARY 2020 SHEET 7 OF 10	